

CONNECTOR MANUFACTURERS

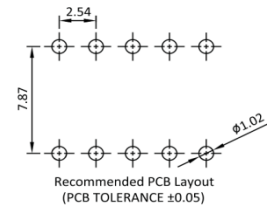
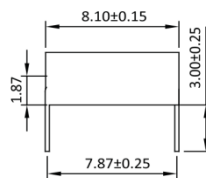
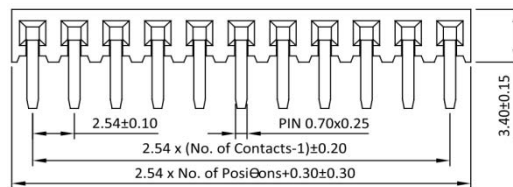
TOPTek®
HARDWARE ELECTRONIC MANUFACTURER

 www.toptek-co.com

Female Header 2.54mm 1 Row Side Entry Dip Type

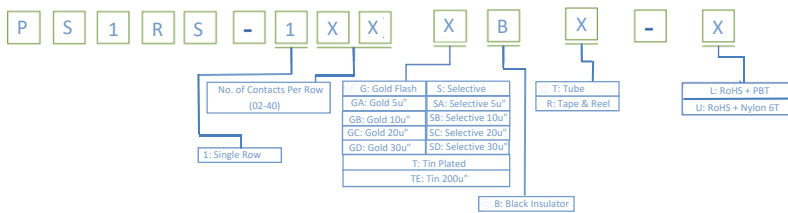
Specifications
 Current Rate: 3 AMP
 Insulation Resistance: 1000MΩ Min.
 Contact Resistance: 20mΩ Max.
 Dielectric Voltage: 1000V AC for one minute
 Operation Temperature: -40°C to +105°C

Material
 Insulator: Hi-Temp. Thermoplastic, UL 94V-0
 Terminal: Copper Alloy
 Plating: Gold Plated



Part No.: PS1RS-1XX-X

ORDER INFORMATION



©: Standard Recommend



RoHS